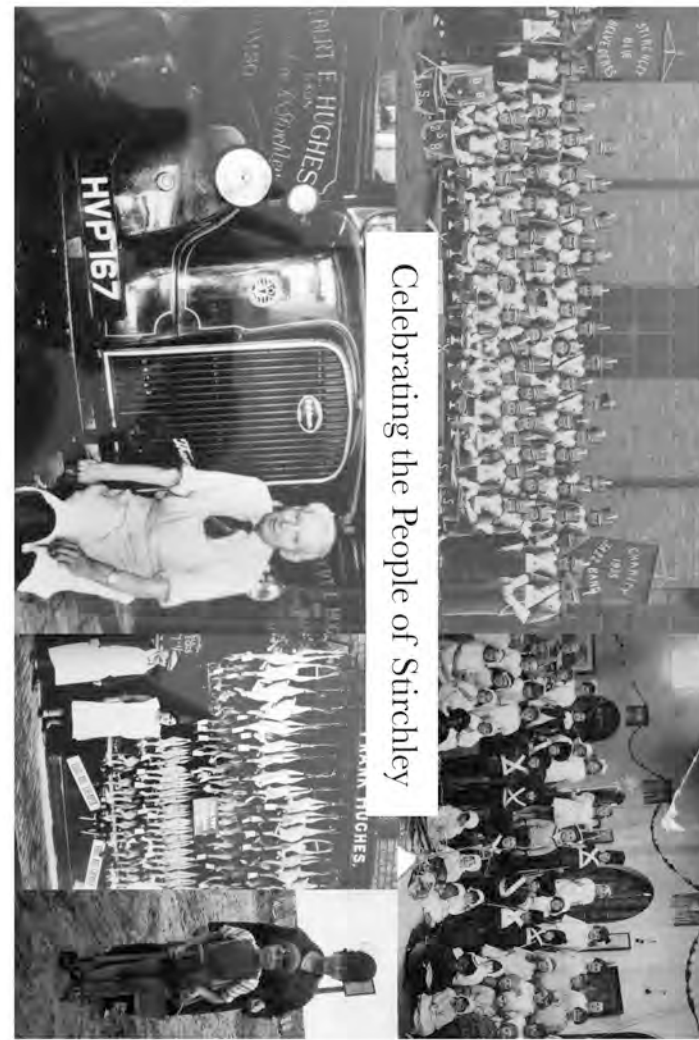


LOST PROPERTY

School for Mothers

Although this building can still be seen and is an NHS health clinic on Charlotte Road its previous life is part of Stirchley's lost property. 'Stirchley & Cotteridge School for mothers' contributed to the rearing of happy healthy Stirchley citizens from 1913. It started life in a cottage in Windsor Road and then a large house on the corner of Bournville Lane and Lea House Road moving to this building paid for by the Trident Trust on land given by the Cadbury's.



Colour me in



Previously:
Bonchills Butchers

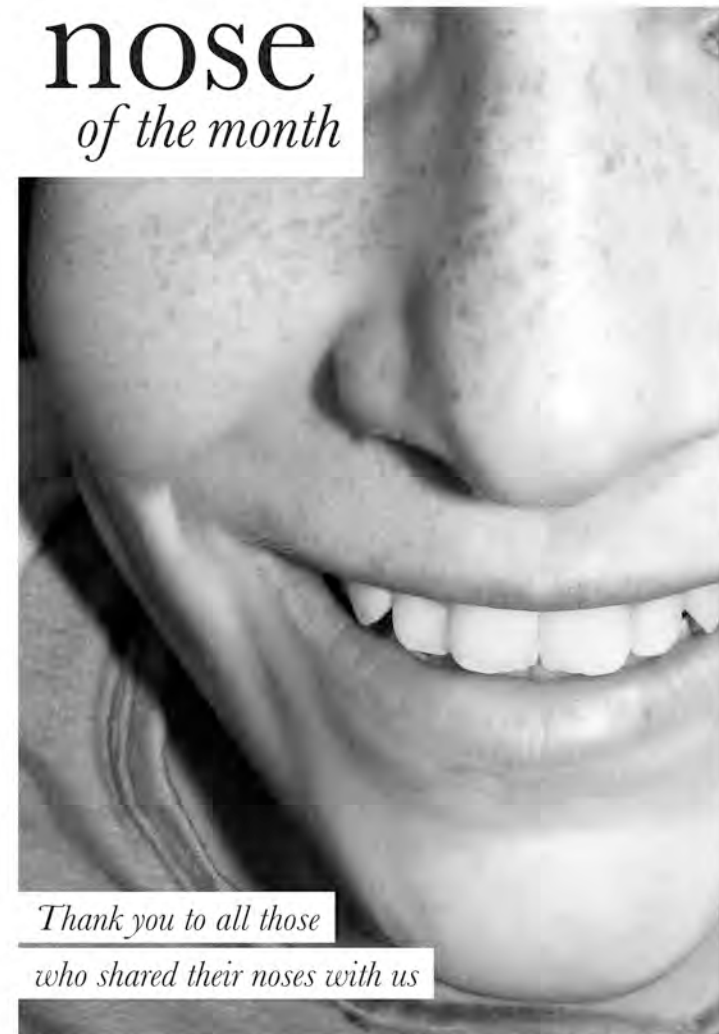


Ada Bonchill
- 1885-1965



Behind the shop front
- 1421 Pershore Road

nose of the month



Thank you to all those who shared their noses with us



ell..., this is the final issue of the Stirchley Knows and in it we celebrate Stirchley's prosperity and the role that individual, ordinary Stirchley folks have played in its fortunes. It's easy to imagine that Stirchley's growth and prosperity can be put down to the influences in the local area of the Cadbury's and Nettlefolds of GKN. As big employers in the 20th century they bought many people to settle in the area - in turn supporting the rapid growth of TASCOS. At the same time though the small businesses that flourished here - particularly the shops and the people who ran them - created a vibrancy and purpose to the area. These were owned and run by ordinary people - often the same family operated businesses for years. Likewise the social and cultural events that took place were all lead by individuals coming together to organise and make a commitment to their local area. The close connections between those who lived here, did business here and the bigger 'corporates' meant that for many many years Stirchley has been a great place to live. The strong connections that used to exist may have been weakened over the years but now there are great opportunities to keep supporting local businesses, services and events - our 'Day in the Life' of a Stirchley family gives you some tips - and our 'Did you Know?' points to the height of the Stirchley Carnival - a truly collaborative production which has taken place at intervals over the last 100 years. Our current project will be drawing to a close in March but we will be working on plans to revive the Carnival tradition in a new form.

We hope you've enjoyed reading the Stirchley Knows - if you have missed any issues just visit www.prospectors.org.uk.

Stirchley KNOWS

Issue 6 | Free



Hazelwell Lane as it was known
- photo from the Geoff Thompson archive

Designed by:
Ellie Grey
Ryan Letheren
Kate Morris
Hannah Rose
with
Mark Murphy

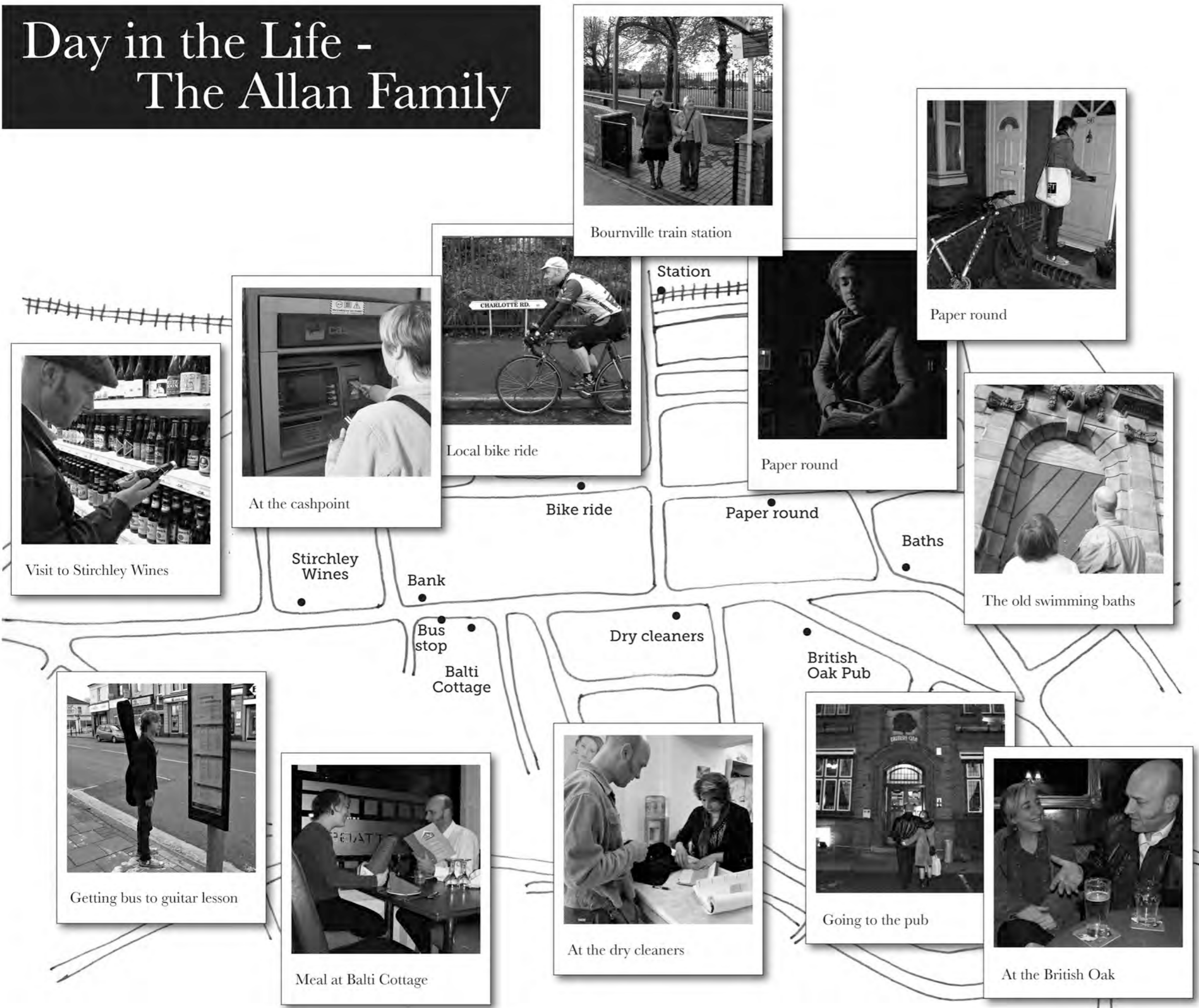
Edited by:
Emma Larkinson
Jayne Murray

Previous issues of Knows available at www.prospectors.org.uk



LOTTERY FUNDED

Day in the Life - The Allan Family



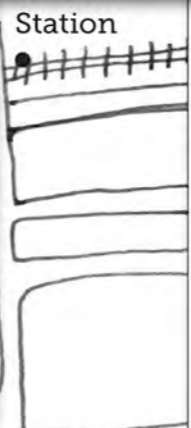
Bournville train station



Paper round



Local bike ride



Station



Paper round



The old swimming baths



Visit to Stirchley Wines



At the cashpoint

Stirchley Wines

Bank

Bike ride

Paper round

Baths

Bus stop

Balti Cottage

Dry cleaners

British Oak Pub



Getting bus to guitar lesson



Meal at Balti Cottage



At the dry cleaners



Going to the pub



At the British Oak

Did you KNOW?

Stirchley Carnival took place from 1936-1939 - a procession assembled at the bottom of Cartland Road and ended at the carnival ground on Bond Street/ Ribblesdale Road via Cotteridge and Maryvale Road.

Stirchley Carnival



When you have finished reading the Stirchley Knows please pass it on to someone else so they can see what we are doing - especially if they are not a Prospector.

(reference: The Wheatsheaf, published by TASCOS)