

*Stirchley*

*Issue 5 | Free*

# KNOWS



*the food issue*



e are celebrating eating and drinking in Stirchley – both old and new. The Wolsey sausage company is one of the few food producing companies left in the village - but there is a lot more going on than meets the eye. Keen food growers beaver away at

Hazelwell Allotments and reap the reward with an array of fresh produce - as do lots of gardeners in the village – even keeping chickens and bantams.

Jewell's Butchers (see behind the shop front) was noted for their Polony and Black Pudding as well as their pork pies - despite the unsettling sound of pigs being slaughtered in the yard accessed from Hazelwell Road! The pubs and beer retailers of Stirchley have served ales and wines for over 150 years – with many beer retailers closing but luckily we still have one of the best in Birmingham – Stirchley Wines.

Collective cooking at the British Restauarnt kept people fed during the war and now the lights of restaurants at night give Stirchley Village quite a different feel. Stirchley's food future looks set to remain diverse and we look forward to enjoying what's on offer!

The magazine is the face of Stirchley Prospects where it is designed and published, and is a slice of our activity.

Keep in touch. [talktous@prospectors.org.uk](mailto:talktous@prospectors.org.uk)

Twitter: [@PlaceProspectors](https://twitter.com/PlaceProspectors) [www.prospectors.org.uk](http://www.prospectors.org.uk)



**nose**  
*of the month*

*We are accepting  
nominations for next month's  
nose, so please get in touch.*

# reader's letter

Send us your *Stirchley* letters:  
talktous@prospectors.org.uk

The 'edible park' is a key priority for the Friends of Hazelwell Park, making the park a useful source of food for local people. We can explore the hidden and not so hidden edible plants - and there is a lot there. New plants can be added which provide some sort of food product.

So far the Friends - and park ranger - have planted a wide range inc: apple, cherry plum, hazel and pear. The aim is to plant more including soft fruits.

When you pick delicious fruit from our parks you truly appreciate the work of people who planted them years ago. We're sure that in the future, people will be thanking us.

There are a number of workdays planned for the next few months. To get involved email [fohpark@gmail.com](mailto:fohpark@gmail.com) or phone 07980 272 940.





Previously:  
Pork Butchers

*'Can Stirchley claim a new  
'Worlds Best' and what  
would it be?  
[talktous@prospectors.org.uk](mailto:talktous@prospectors.org.uk)*

Behind the shop front  
- 1450 Pershore Road

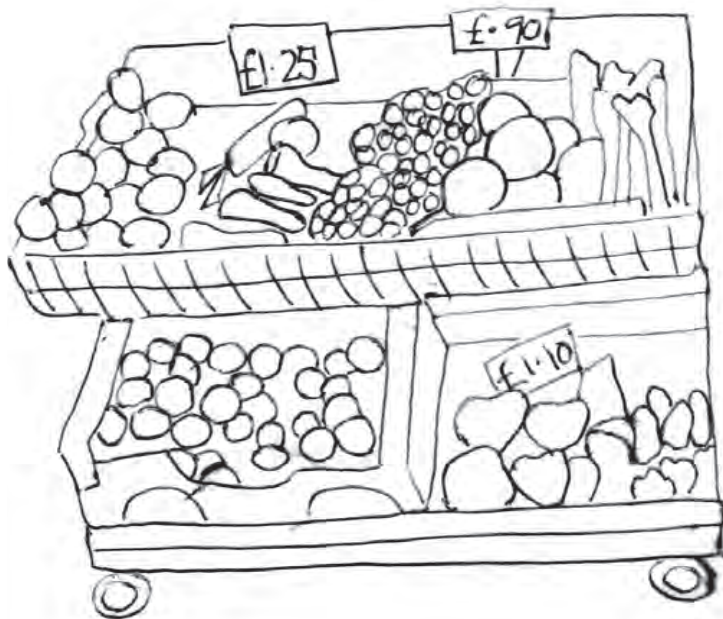
# LOST PROPERTY

## The Co-operative Bakery

**M**aking bread has taken place throughout Stirchley, from the Central Bakery on Pershore Road and on Hazelwell Street from 1905 (see pic, top) When production grew, land at Maryvale Road (see pic, bottom) was acquired from the Cadbury's and production started there in 1929. The new bakery could produce 2400 loaves and hour.

Now Stirchley is set to be the home of a bakery again with the soon to arrive Loaf - Community Bakery and Cookery School which will be located between the two old bakery sites.





# Colour me in

Where is the best  
range of fresh fruit  
& veg available in  
Stirchley?

Answers to:  
talktous@  
prospectors.org.uk

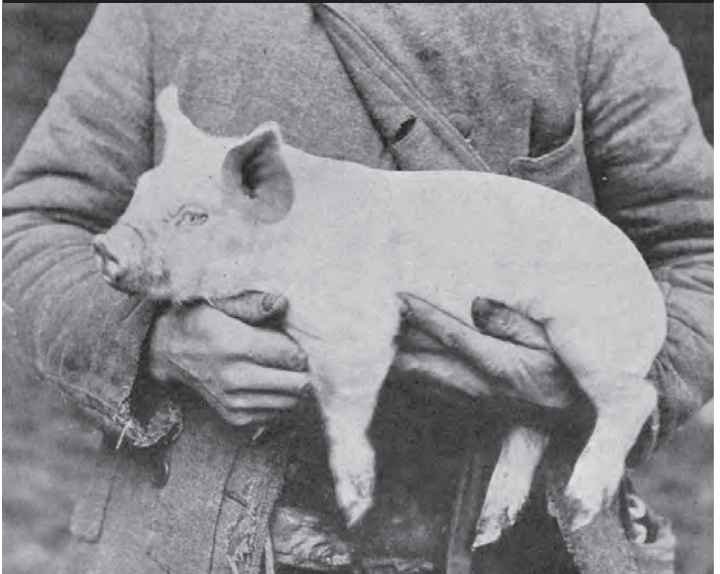
# Did you **KNOW**?

It is well known that Stirchley and Ten Acres cooperative society played a leading role in servicing the food needs of the community of Stirchley Village - particularly as the village grew rapidly to accommodate workers at Cadburys. The collective trading of food was central to their philosophy.

In the early days many members kept pigs - one for the co-op and one for themselves- buying feed at wholesale prices. There was a pickle factory on Mayfield Road that processed beetroot and made fresh toffee apples.



## Pigs for **TASCOS**



When you have finished reading the Stirchley Knows please pass it on to someone else so they can see what we are doing - especially if they are not a Prospector.

(reference: The Wheatsheaf, published by TASCOS)

# A Snapshot of food on sale in Stirchley.



San Marino Pizza



San Marino Pizza



The Golden Palace



The Golden Palace



Bournville Lane Fish Bar



Bournville Lane Fish Bar



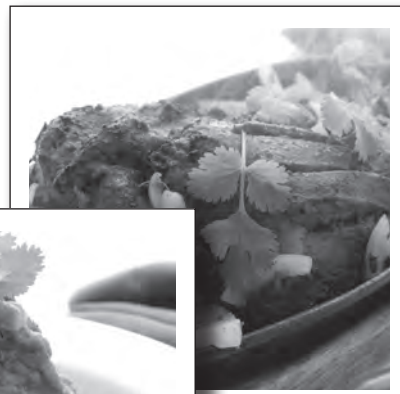
Wards Greengrocers



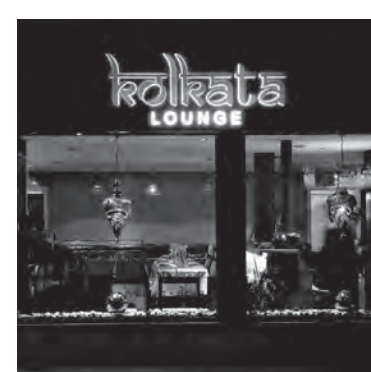
Wards Greengrocers



Akram's Kashmiri Cuisine



Kolkata Lounge



Kolkata Lounge



Akram's Kashmiri Cuisine



*closing day at  
Hughs' Greengrocers*

Designed by:  
Ellie Grey  
Ryan Letheren  
Kate Morris  
Hannah Rose  
with  
Mark Murphy

Edited by:  
Emma Larkinson  
Jayne Murray

Previous issues of Knows available  
at [www.prospectors.org.uk](http://www.prospectors.org.uk)

Place  
Prospectors  
*community interest company*



**LOTTERY FUNDED**